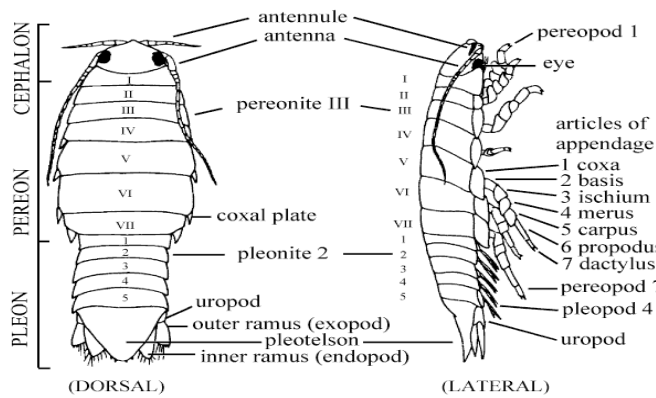


# **A GUIDE TO THE COASTAL ISOPODS OF CALIFORNIA**

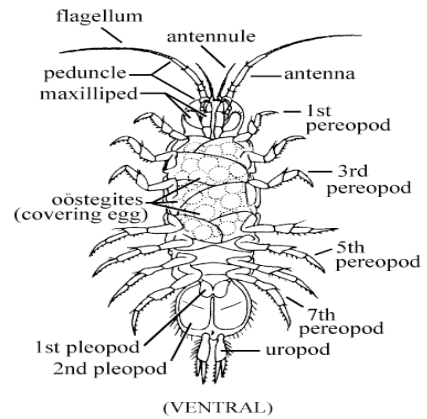
Richard C. Brusca, Vânia R. Coelho, Stefano Taiti

## **Plates**

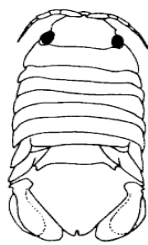
This file was originally published (2001) on the Tree of Life website:  
[http://tolweb.org/notes/?note\\_id=3004](http://tolweb.org/notes/?note_id=3004)



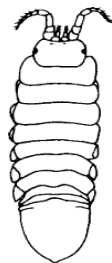
1. CIROLANID



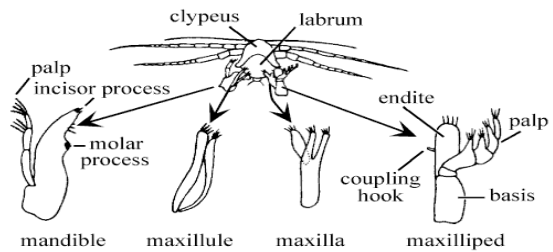
2. ASELOTAN



3. SPHAEROMATID



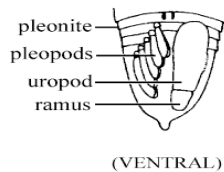
4. IDOTEID



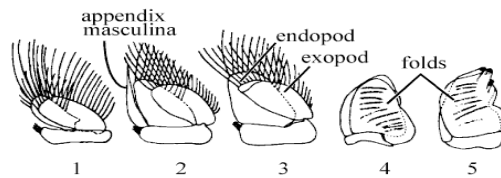
5. MOUTHPARTS



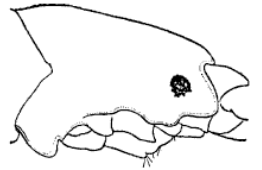
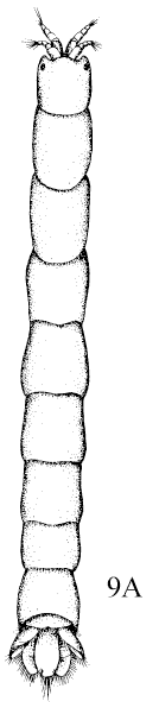
6. PENES



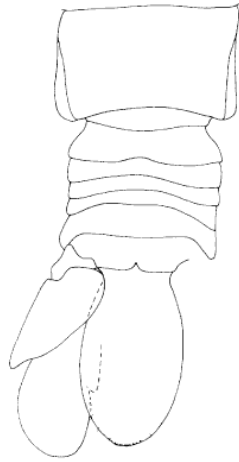
7. IDOTEID PLEON



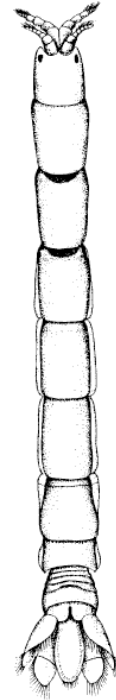
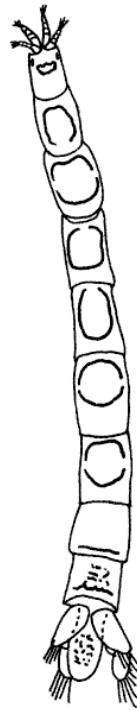
8. PLEOPODS



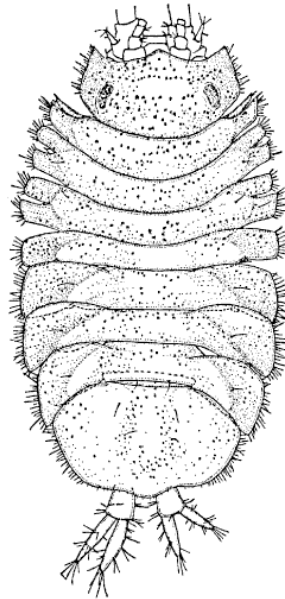
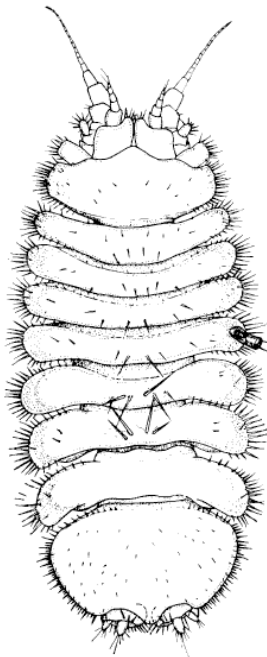
9B



9A

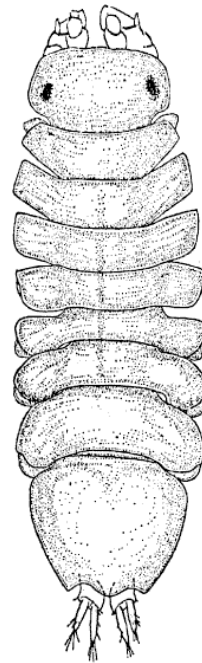
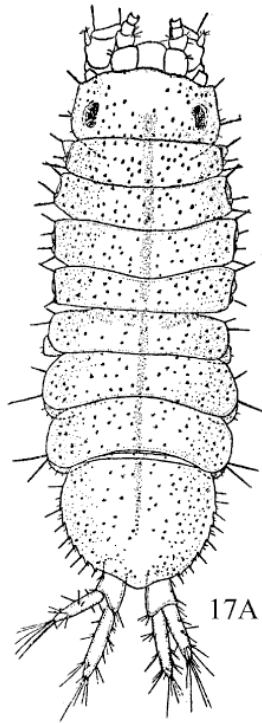
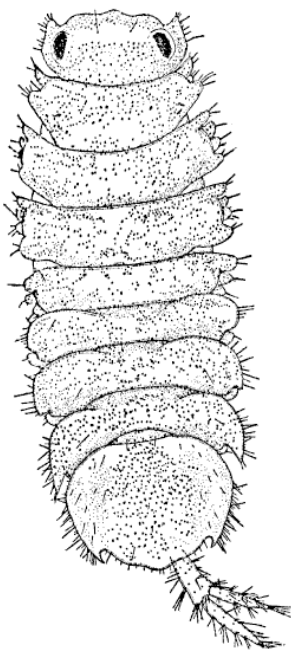


11. *Mesanthura occidentalis*

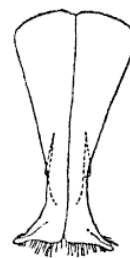
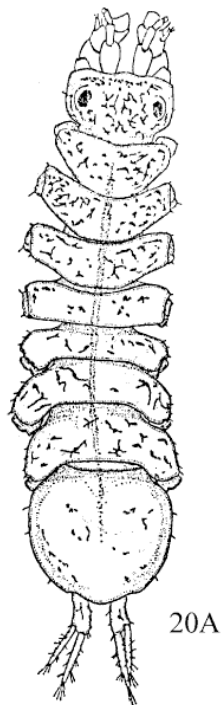
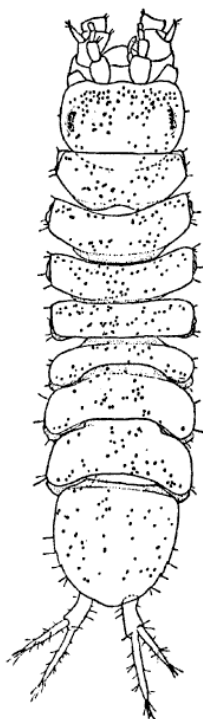


15B

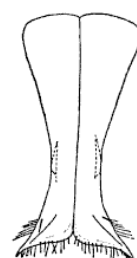
15A



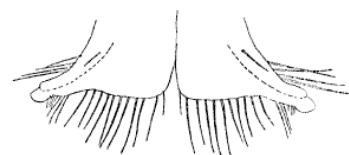
16. *Janira occidentalis*



20B



17B



20C

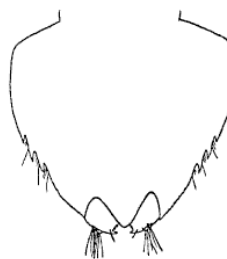
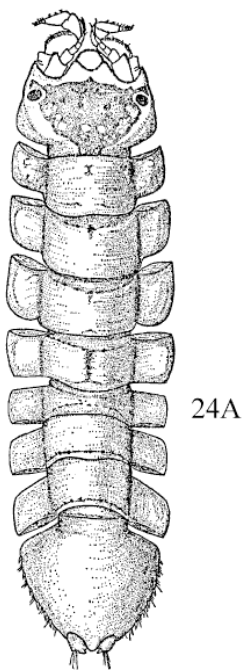
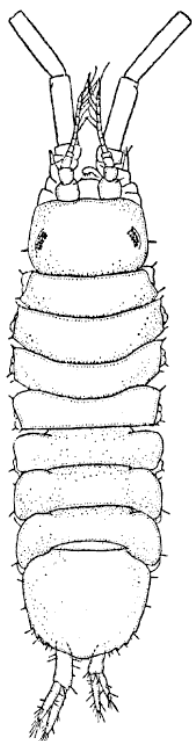
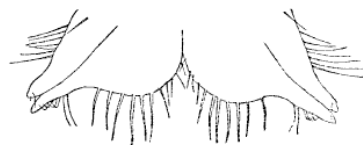
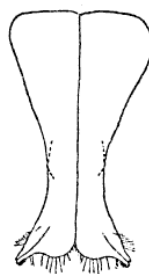
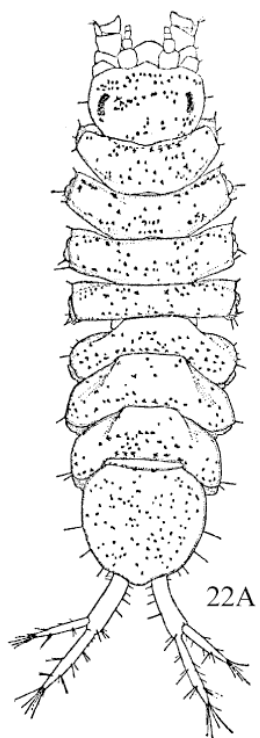
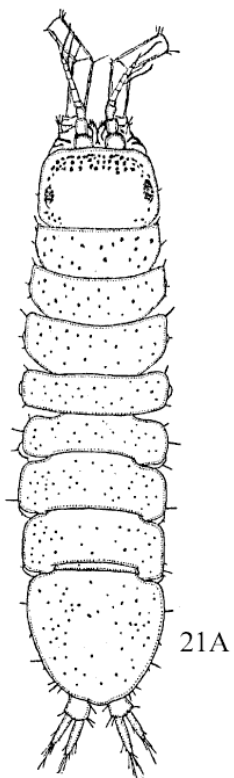
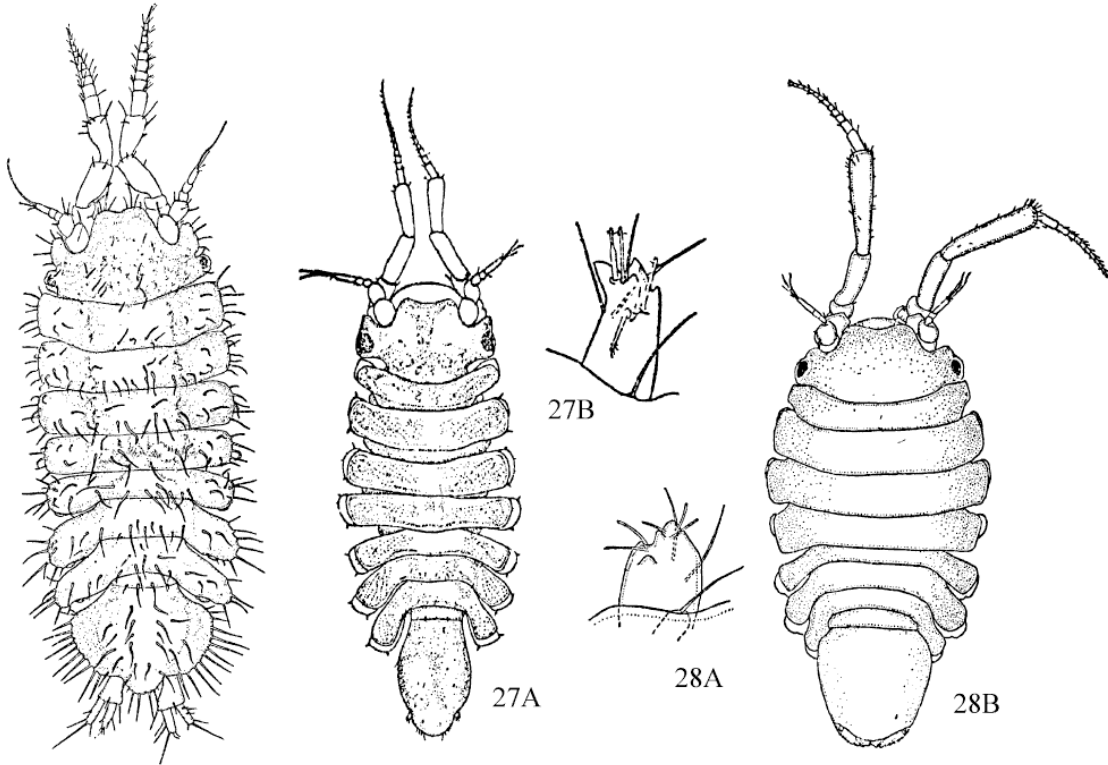
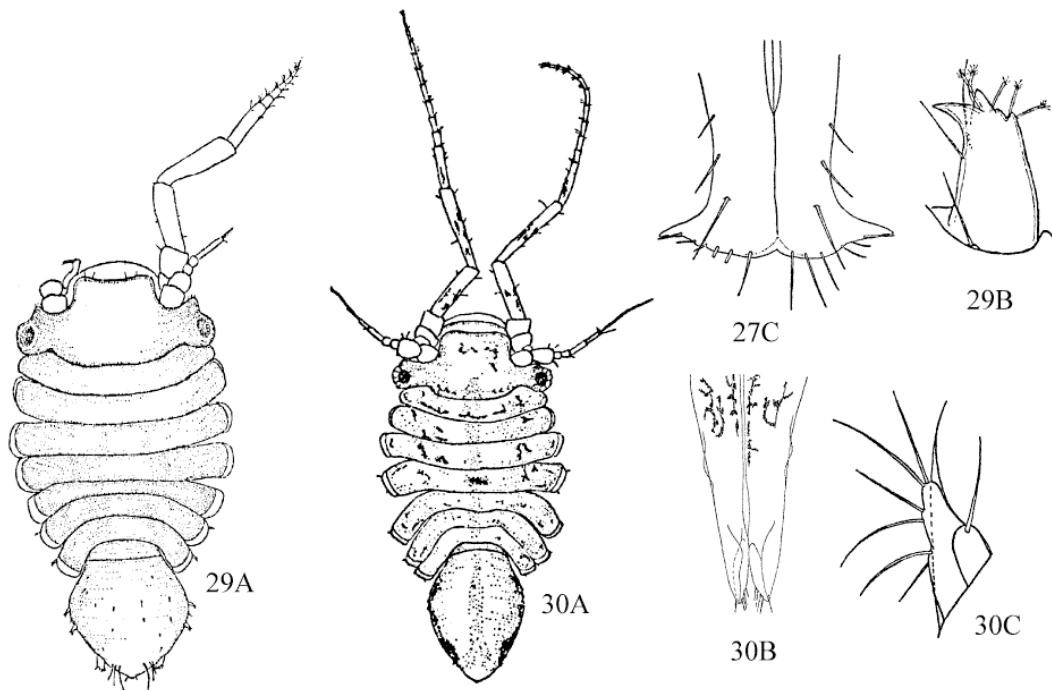
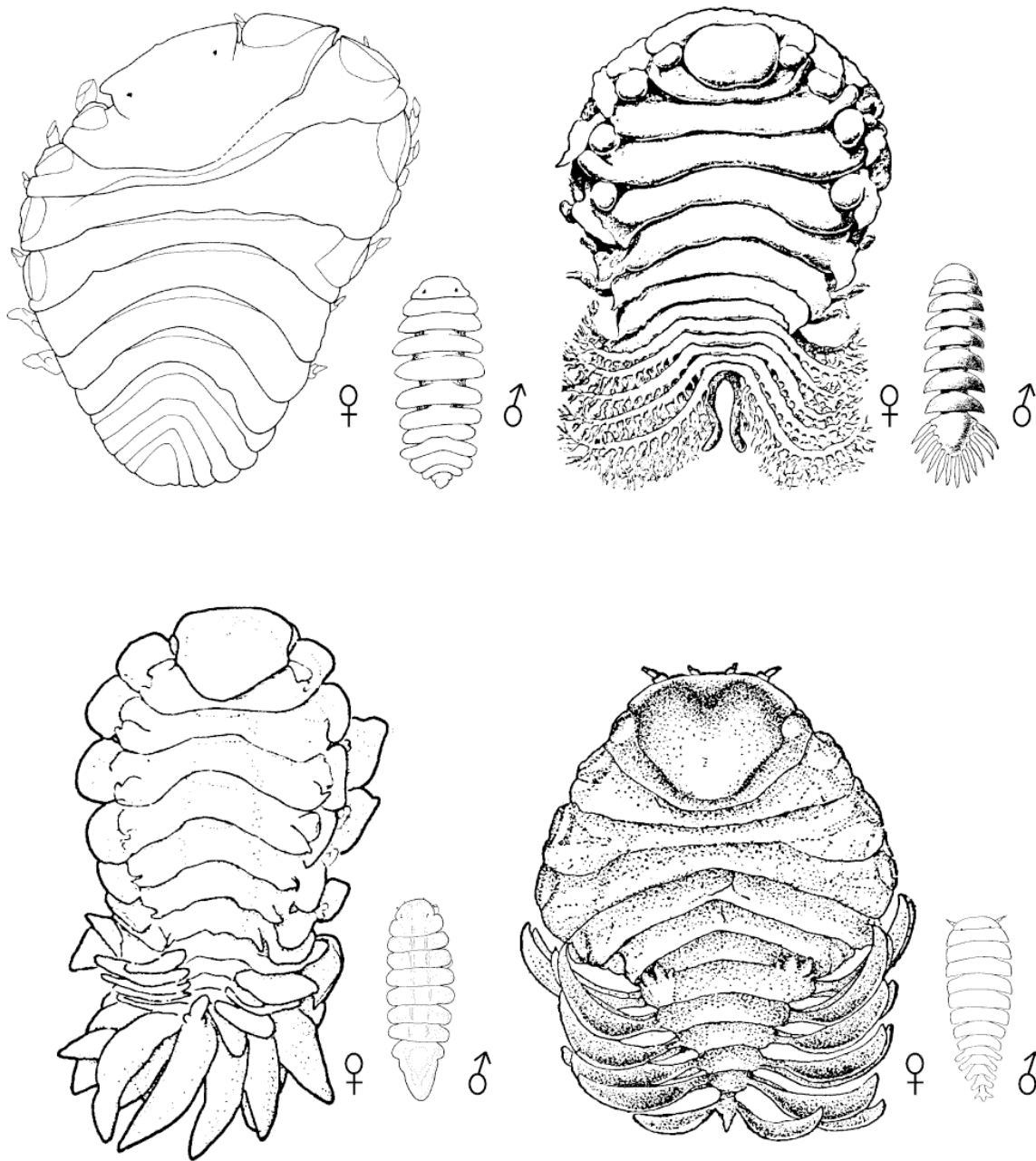


PLATE 04

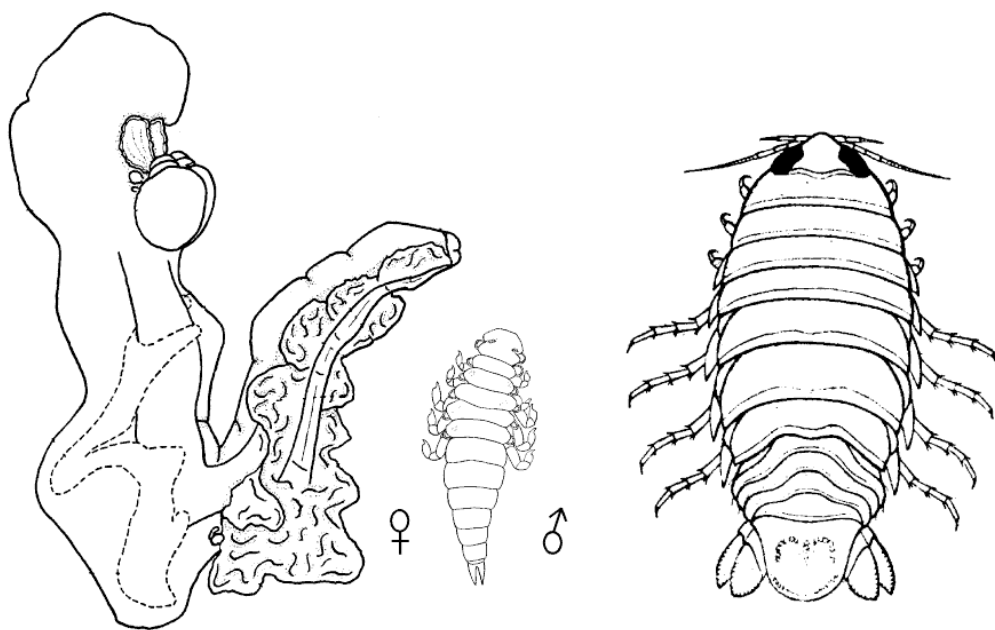


27. *Munna chromatocephala*

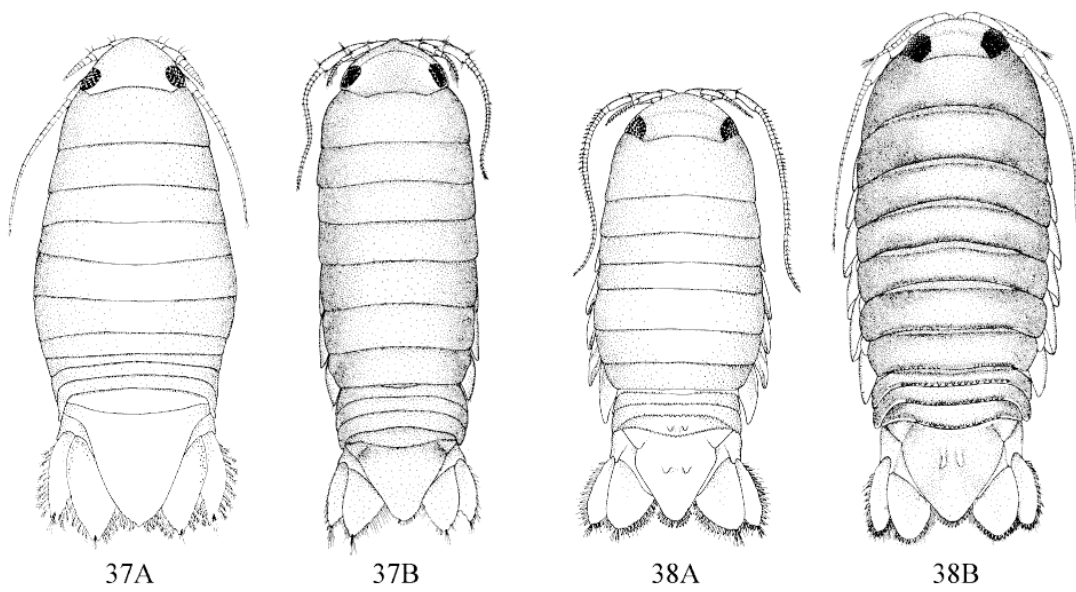




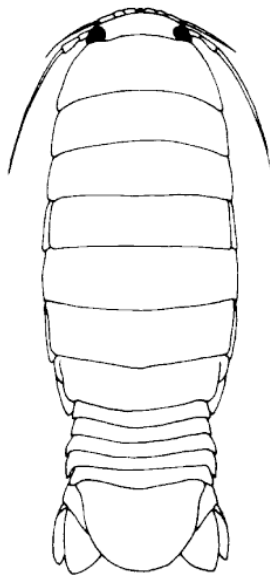
34. *Phyllodurus abdominalis*



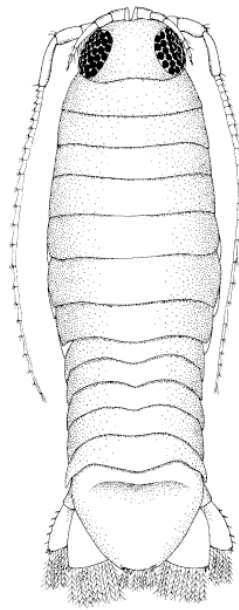
*eta signal*



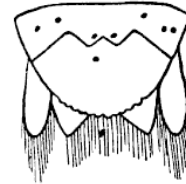




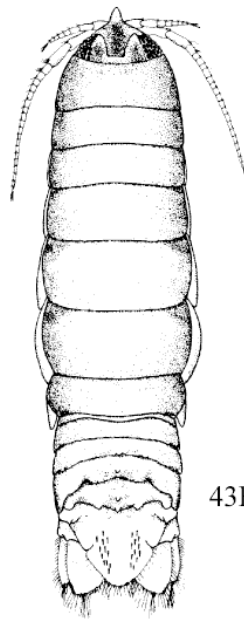
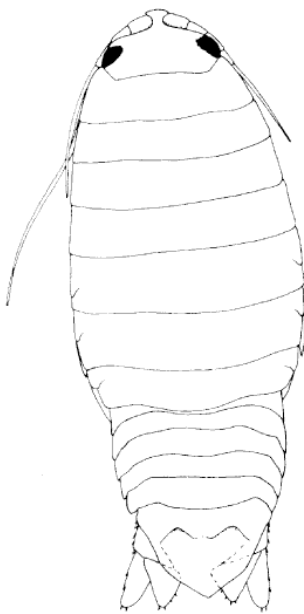
39. *Eurvalana arcuata*



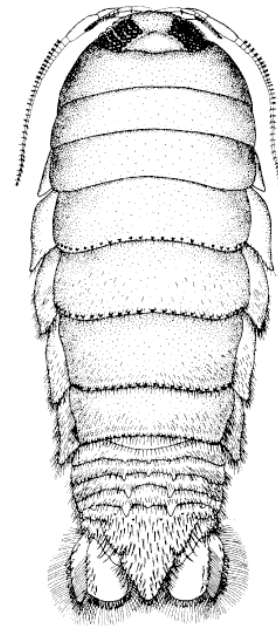
40. *Eurvalana arcuata*

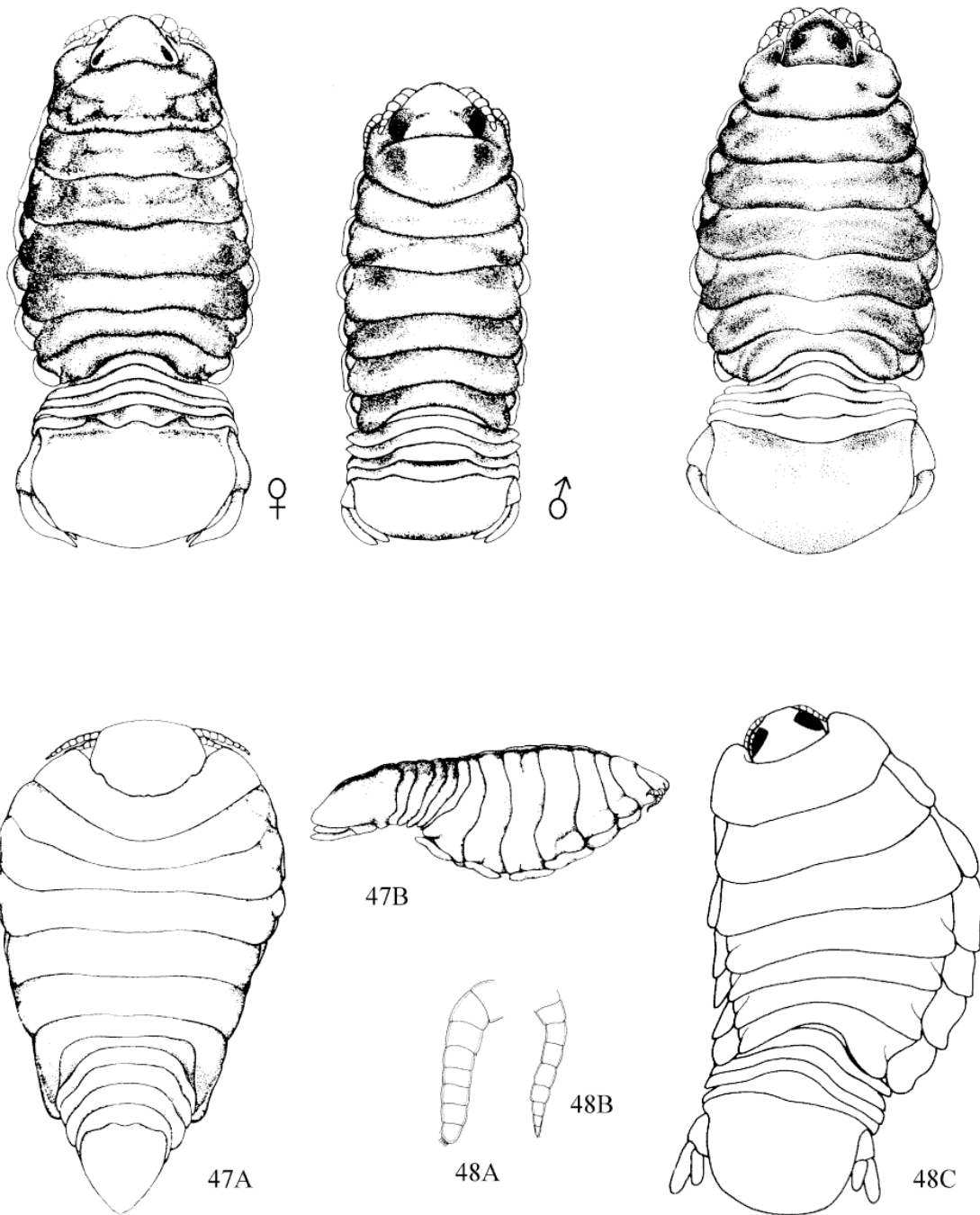


43A

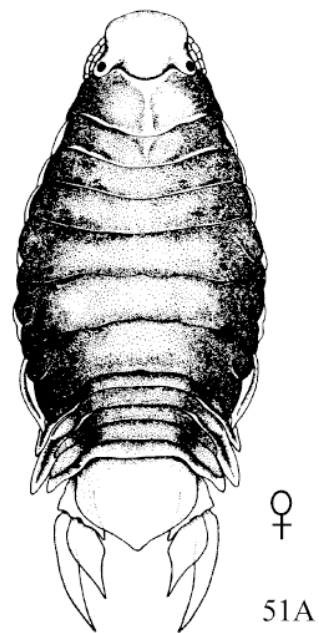
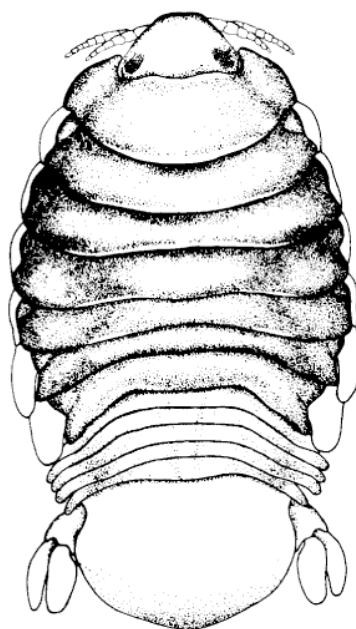
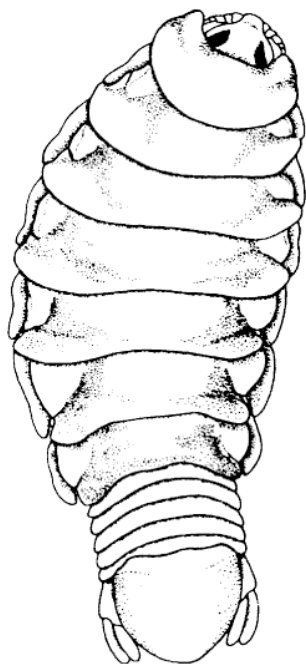


43B

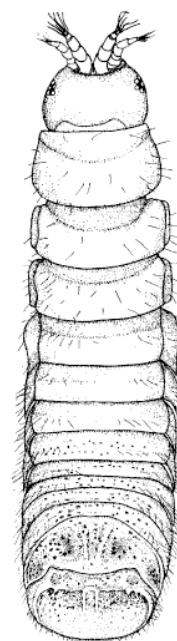
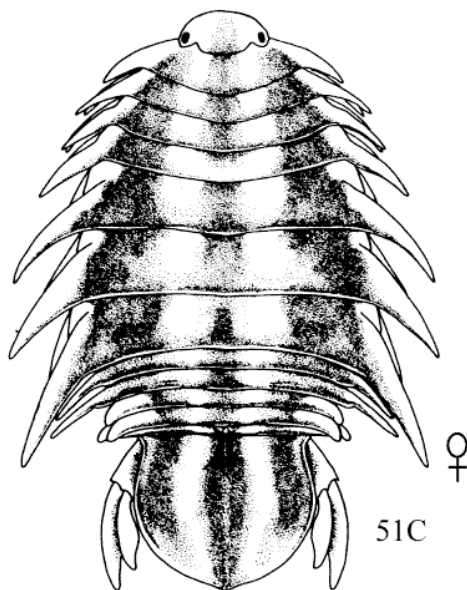
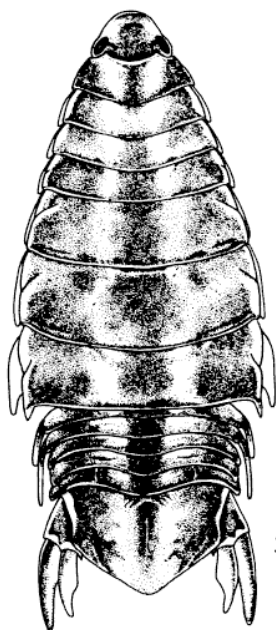


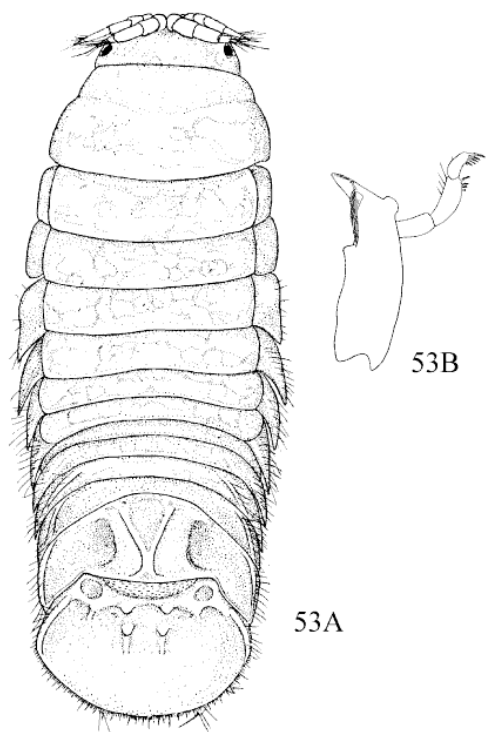


47. *Enispa convexa*

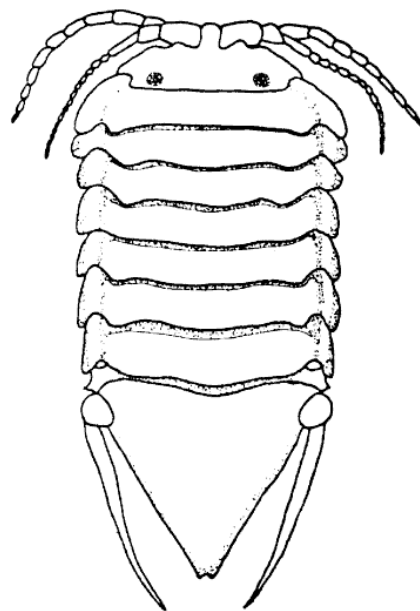
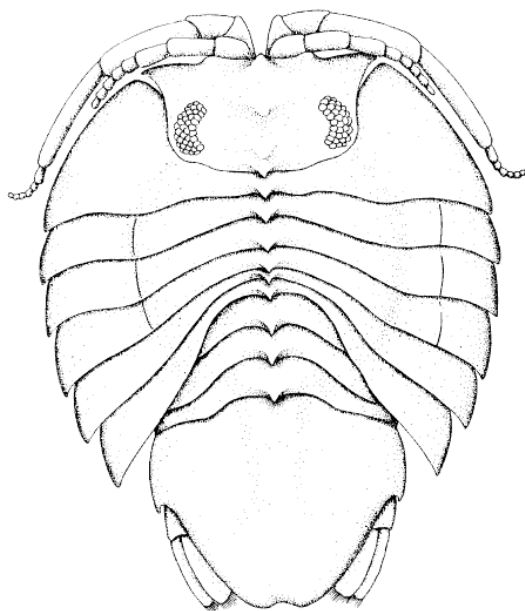
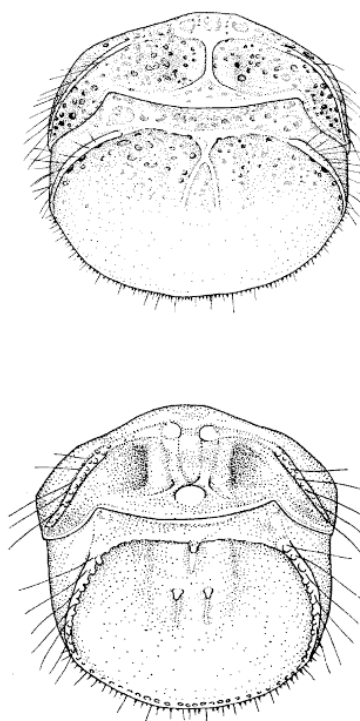


50. *Elthusa vulgaris*

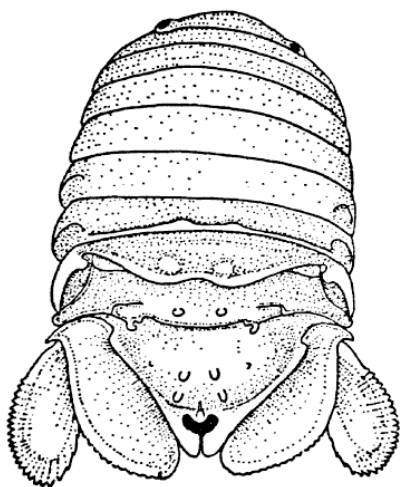




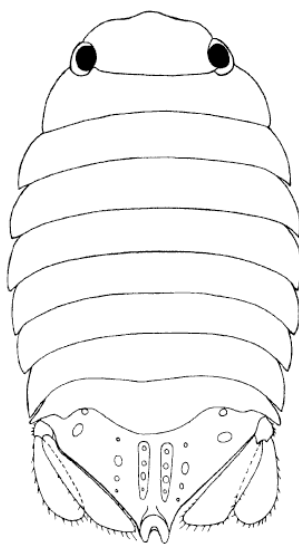
53. *Limnoria quadripunctata*



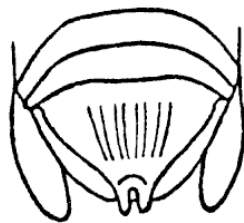
57. *Ancinus granulatus*



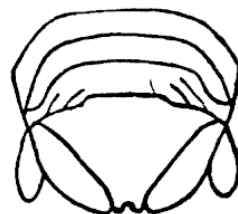
58. *Dynamenella dianae*



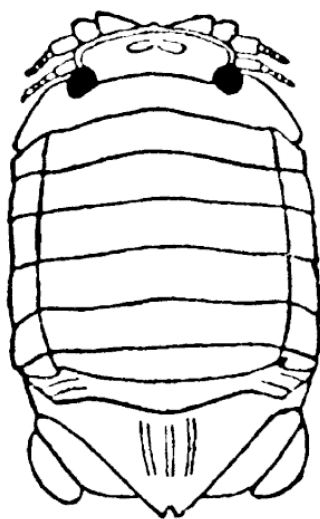
59. *Dynamenella sheareri*



60. *Dynamenella benedicti*



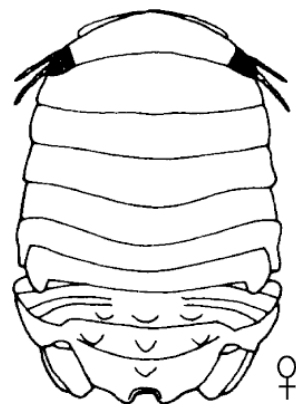
61. *Dynamenella glabra*

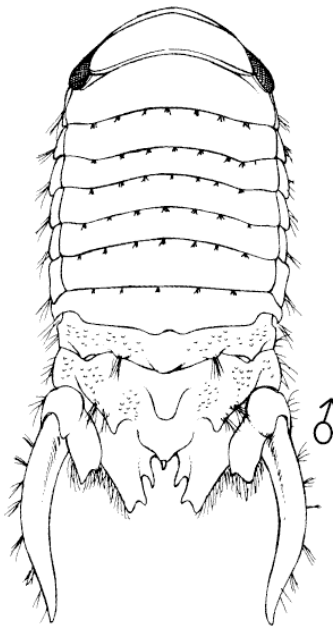


62. *Dynamenella dilatata*

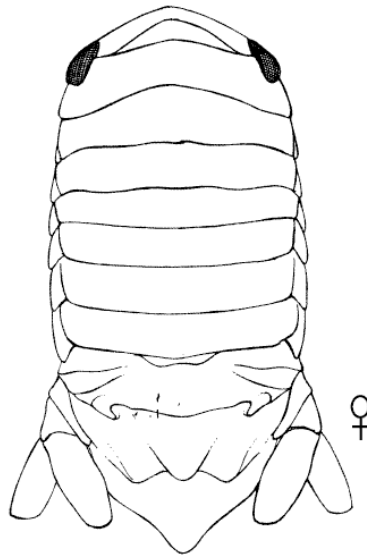


63. *Paracerceis cordata*

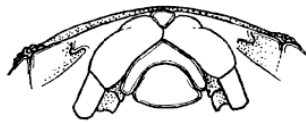
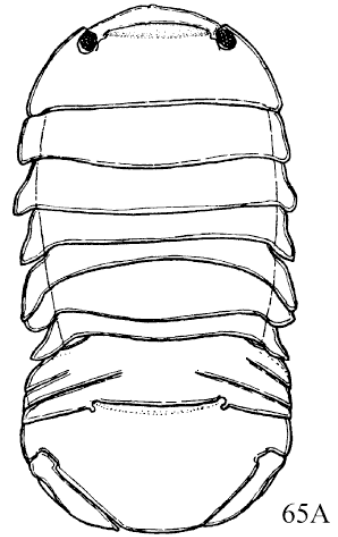




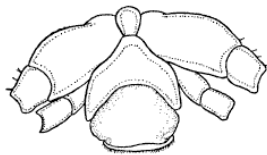
64. *Paracerceis sculpta*



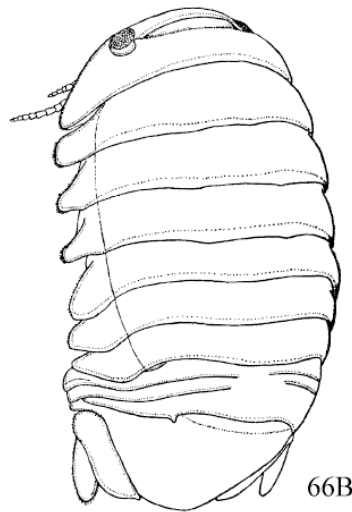
65. *Gnorimosphaeroma noblei*



65B

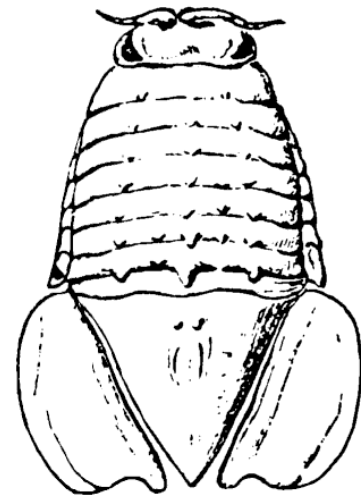


66A

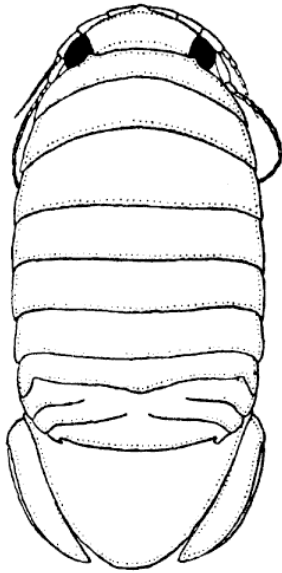


66B

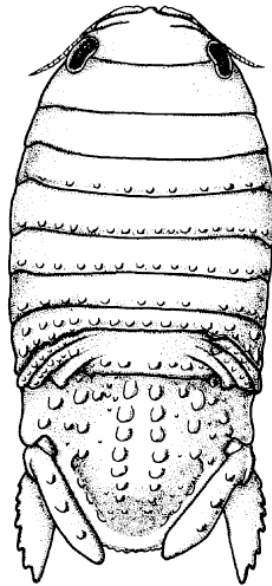
66. *Gnorimosphaeroma oregonense*



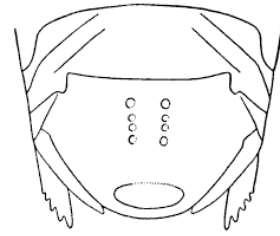
67. *Exosphaeroma amplicauda*



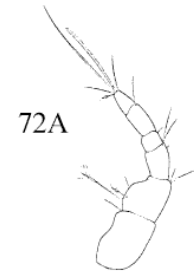
68. *Exosphaeroma inornata*



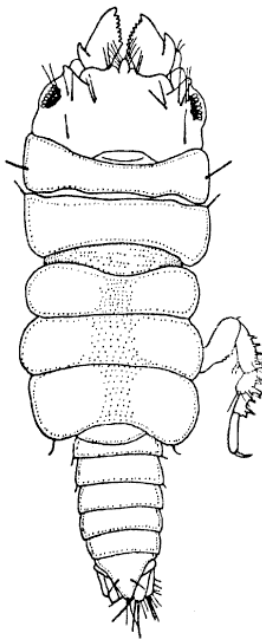
69. *Sphaeroma walkeri*



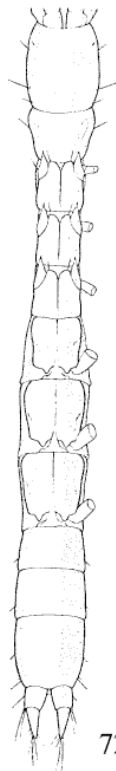
70. *Sphaeroma quoyanum*



72A

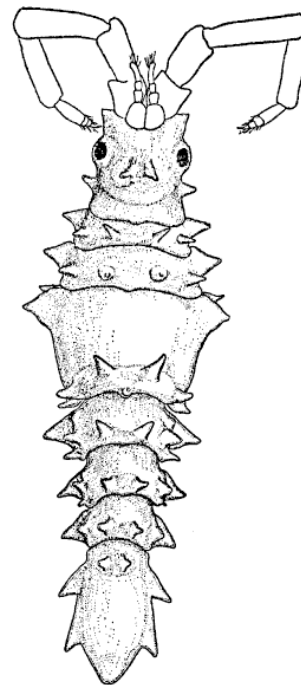


71. *Gnathia steveni*

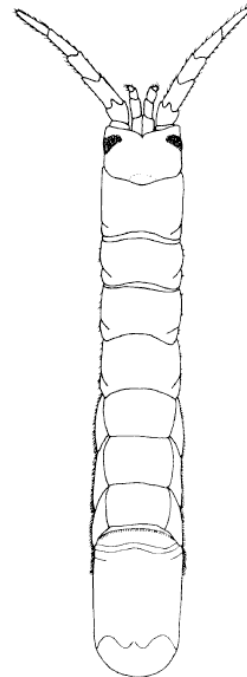


72B

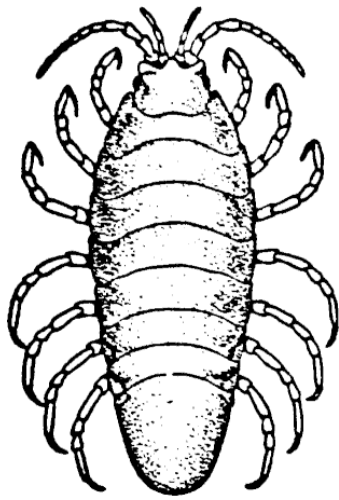
72. *Coxicerberus abbotti*



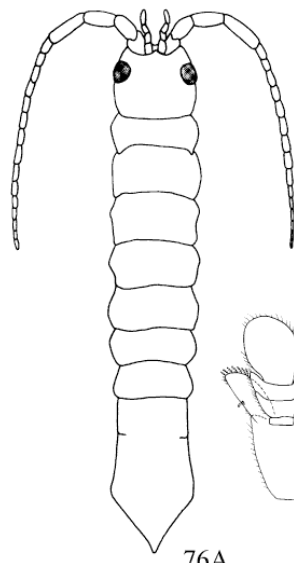
73. *Idarcturus hedgpethi*



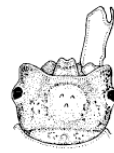
74. *Cleantioides occidentalis*



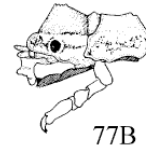
75. *Colidotea rostrata*



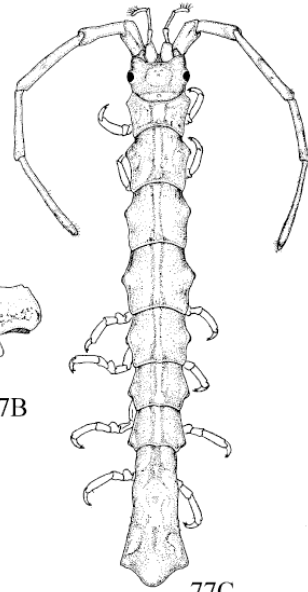
76. *Colidotea findleyi*



77A

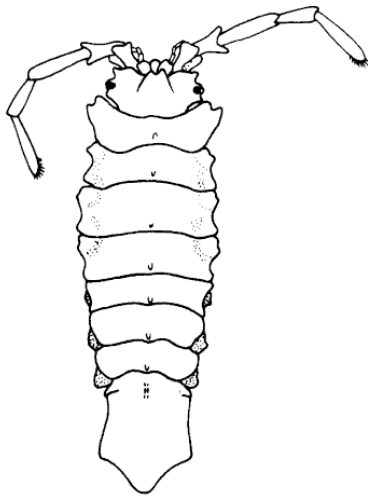


77B

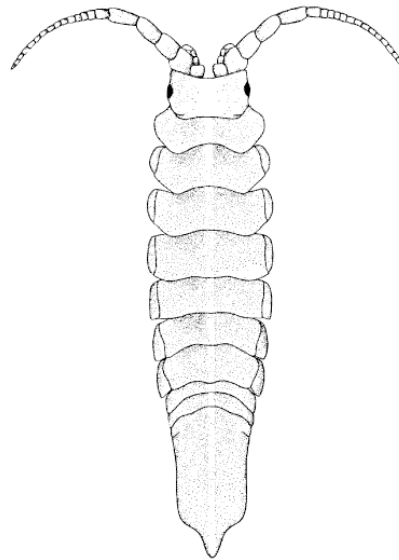


77C

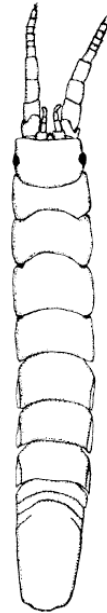
77. *Erichsonella crenulata*



78. *Erichsonella pseudoculata*

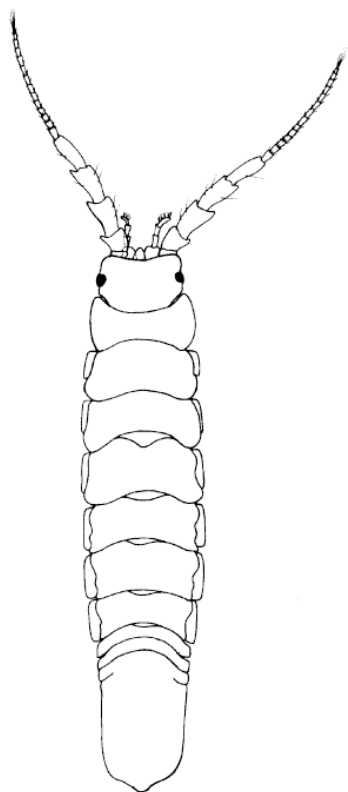


79. *Idotea aculeata*

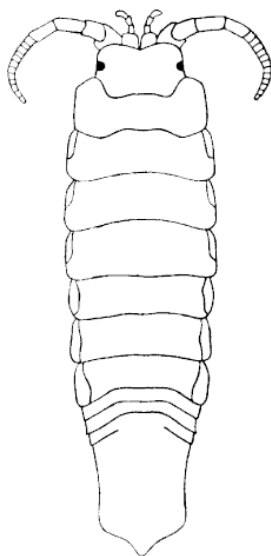


80. *Idotea kirchanskii*





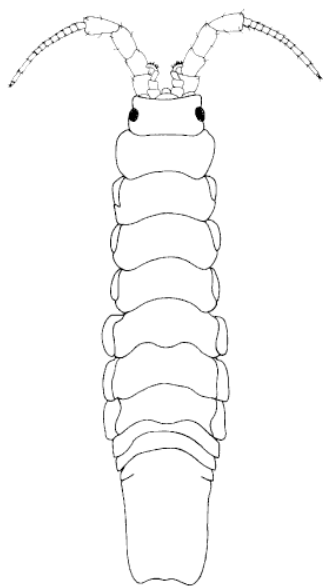
81. *Idotea montereyensis*



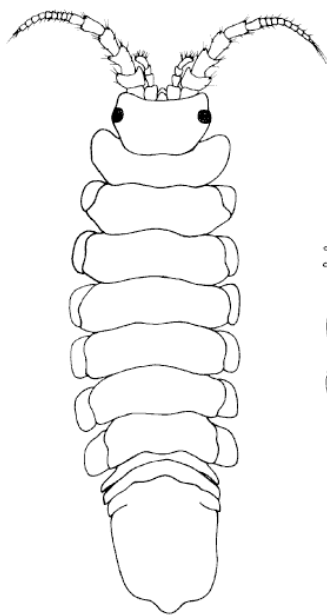
82. *Idotea ochotensis*



83. *Idotea resecata*



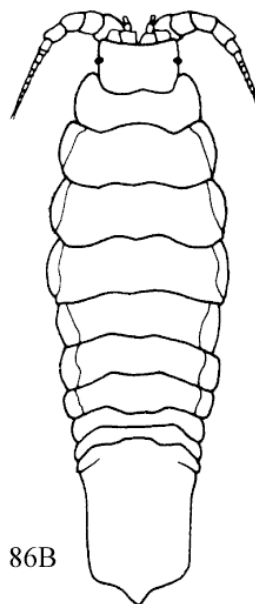
84. *Idotea rufescens*



85. *Idotea schmitti*

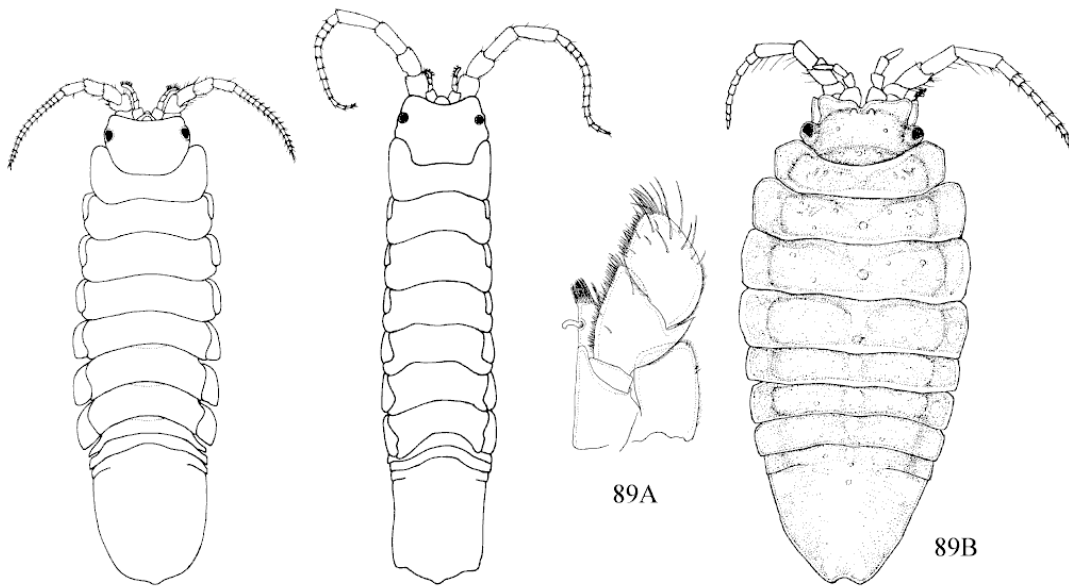


86A



86B

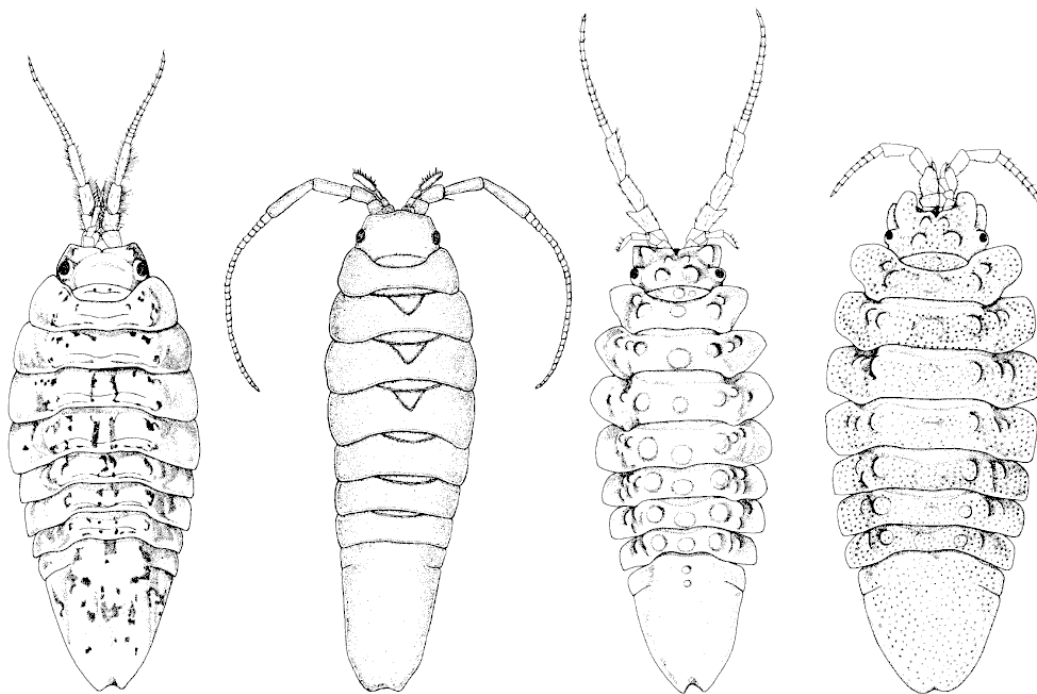
86. *Idotea stenops*



87. *Idotea vosnesenskii*

88. *Idotea urotoma*

89. *Synidotea berolzheimeri*

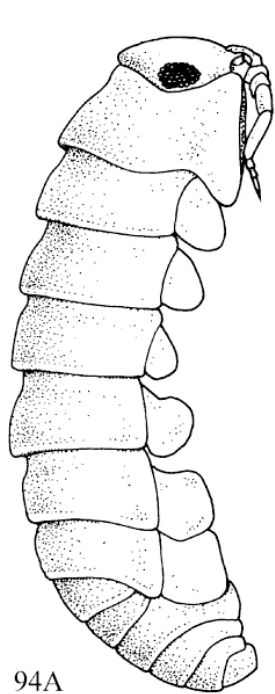


90. *Synidotea consolidata*

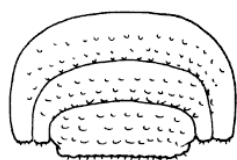
91. *Synidotea harfordi*

92. *Synidotea pettiboneae*

93. *Synidotea ritteri*

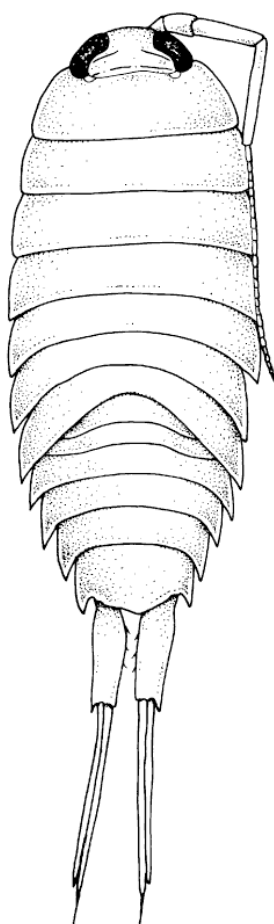


94A

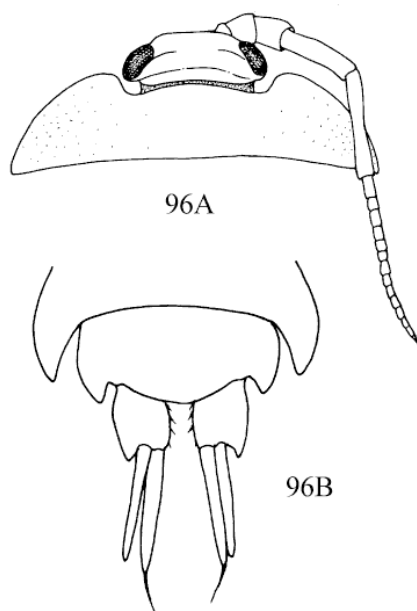


94B

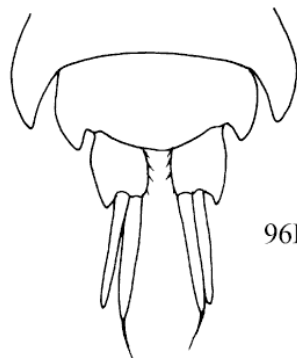
94. *Tylos punctatus*



95. *Ligia occidentalis*

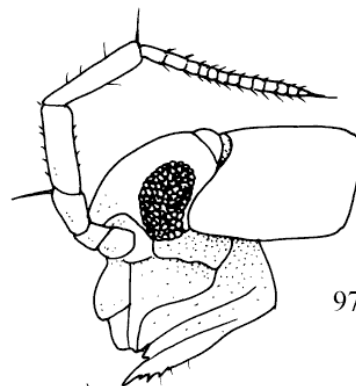


96A

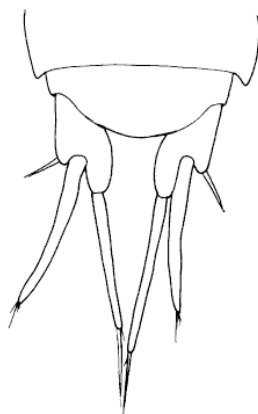


96B

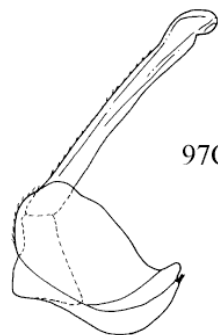
96. *Ligia pallasii*



97A

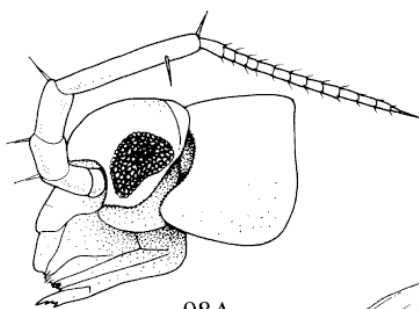


97B

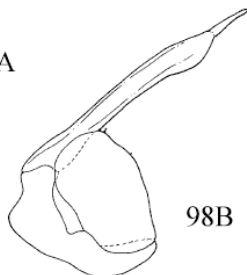


97C

97. *Ligidium gracile*

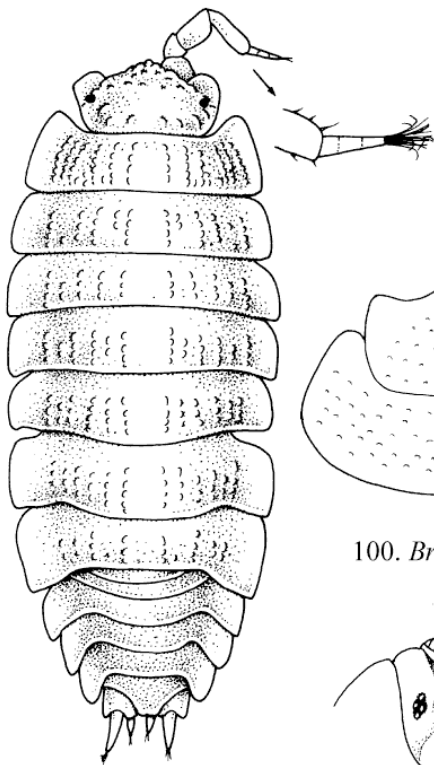


98A

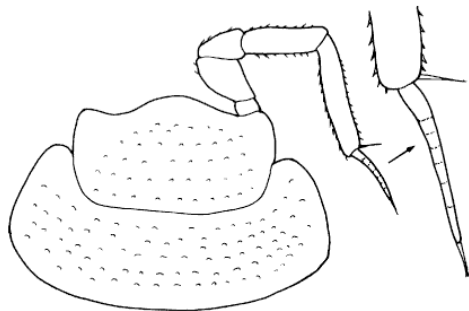


98B

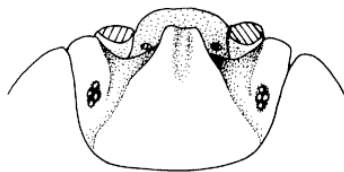
98. *Ligidium latum*



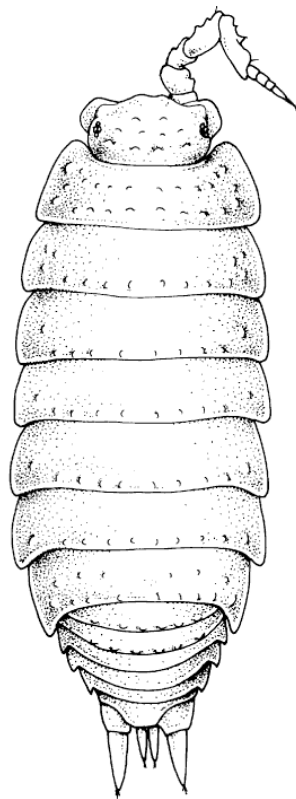
99. *Haplophthalmus danicus*



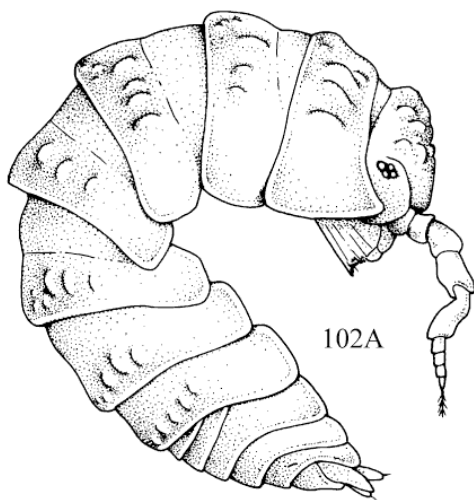
100. *Brackenridgia heroldi*



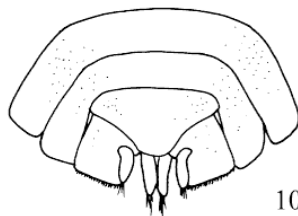
102B



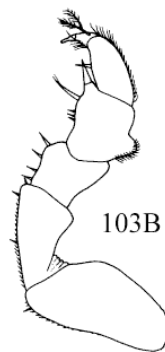
101. *Detonella papillicornis*



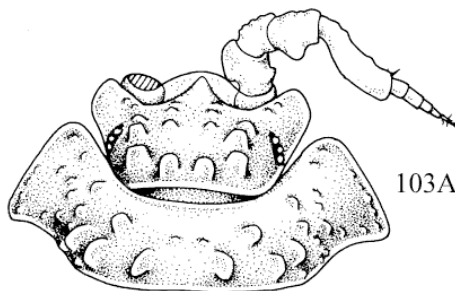
102A



102C



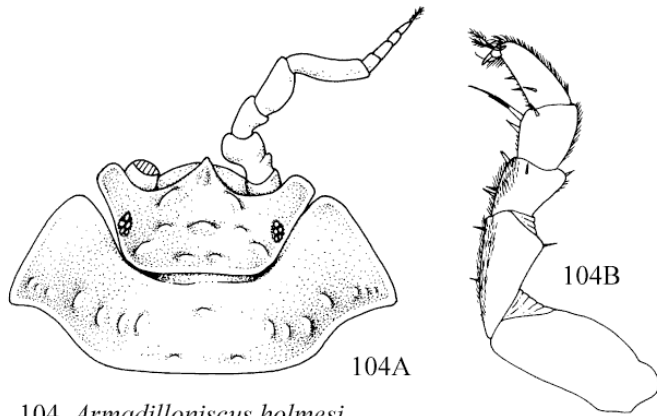
103B



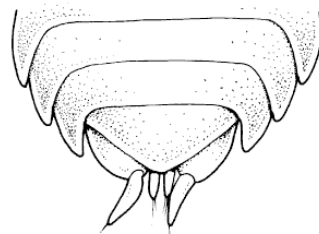
103A

102. *Armadilloniscus lindahli*

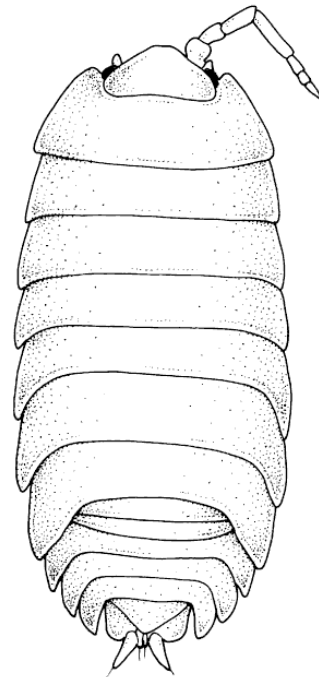
103. *Armadilloniscus coronacapitalis*



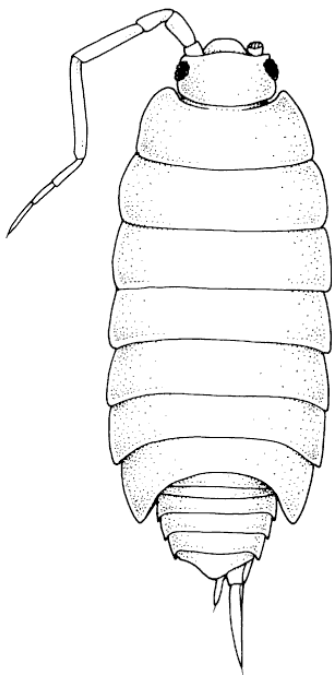
104. *Armadilloniscus holmesi*



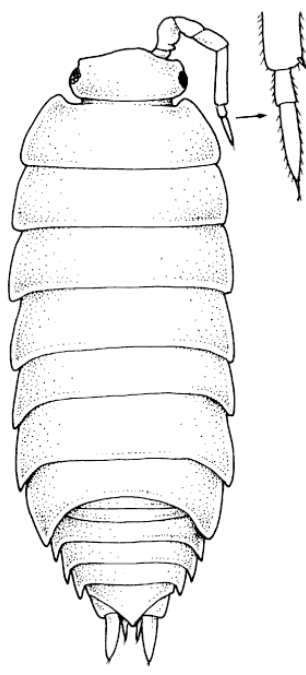
106. *Alloniscus perconvexus*



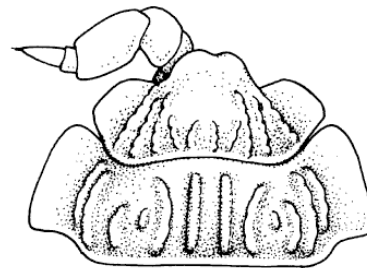
105. *Alloniscus mirabilis*



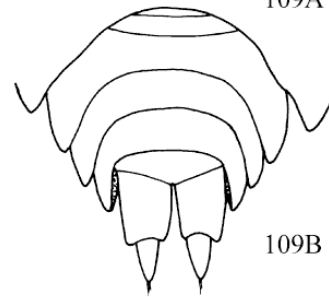
107. *Littorophiloscia richardsonae*



108. *Niambia capensis*

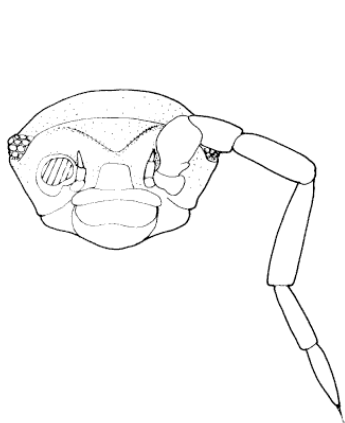


109A

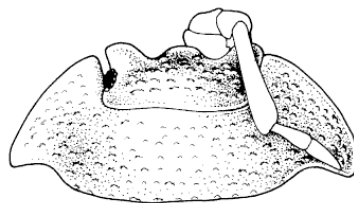


109B

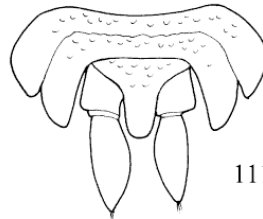
109. *Platyarthrus aiasensis*



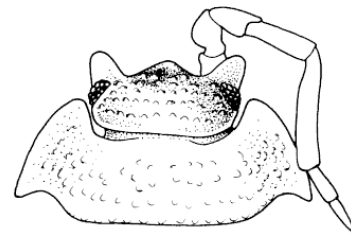
110. *Porcellionides floria*



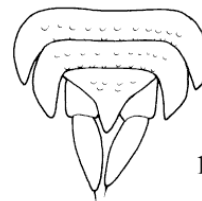
111A



111B



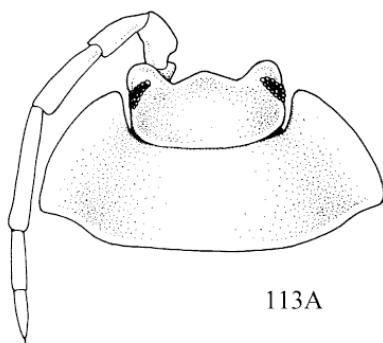
112A



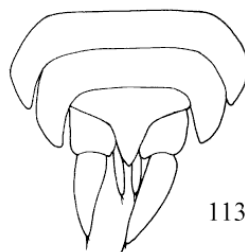
112B

111. *Porcellio dilatatus*

112. *Porcellio scaber*

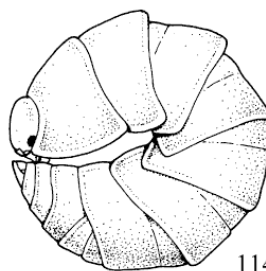


113A

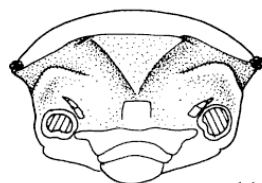


113B

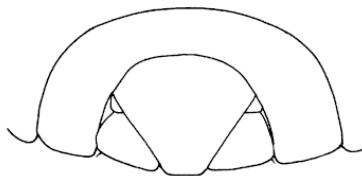
113. *Porcellio laevis*



114A

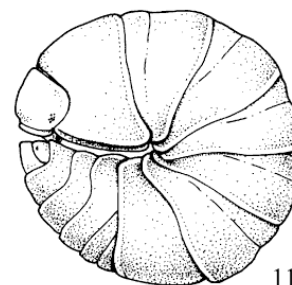


114B

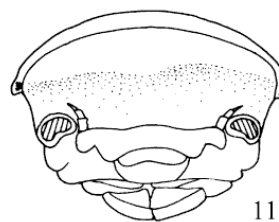


114C

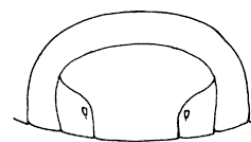
114. *Armadillidium vulgare*



115A



115B



115C

115. *Venezillo microphthalmus*